



## Plot 4 Christopher Rise (No.6 Clos William)

Pontlliw, Swansea, SA4 9FJ

**£395,000**

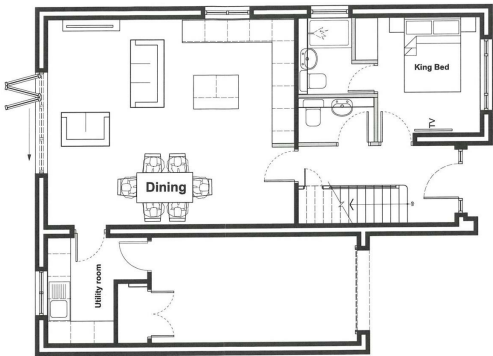


FULL DESCRIPTION

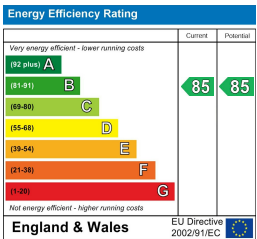
AREA MAP



FLOOR PLANS



EPC



These particulars, whilst believed to be accurate are set out as a general outline only for guidance and do not constitute any part of an offer or contract. Intending purchasers should not rely on them as statements or representations of fact, but must satisfy themselves by inspection or otherwise as to their accuracy. No person in this firm's employment has the authority to make or give any representation or warranty in respect of the property.